



BUCKET ELEVATOR



Congratulations!!,

For being the proud owner of Sepack's Bucket Elevator Machine. This Machine can be used for feeding your products from the lower position to the higher.

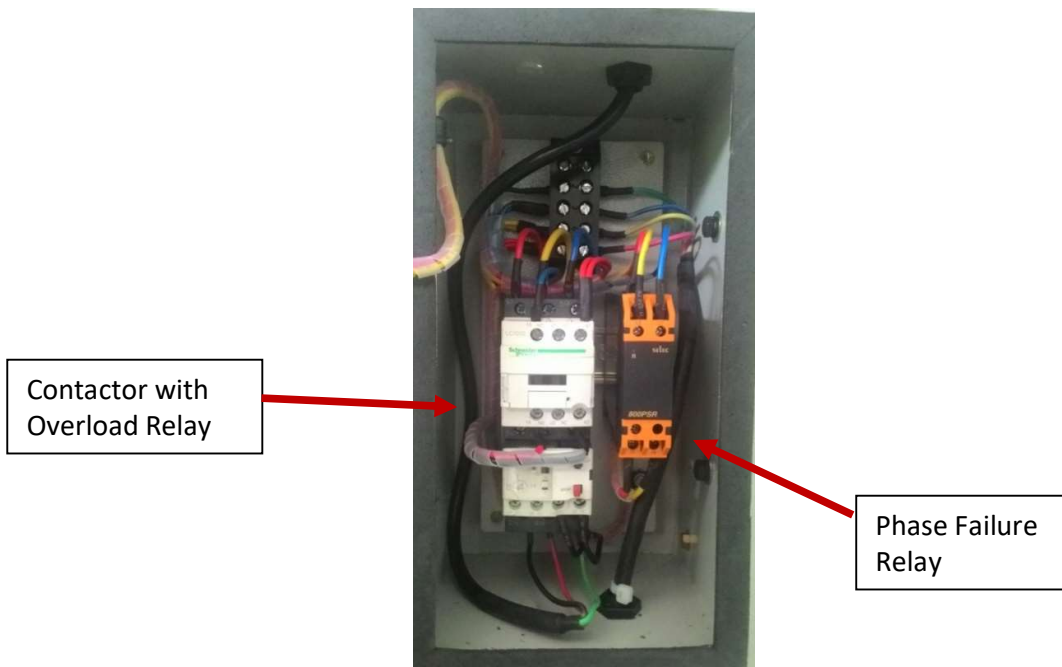
GETTING ACQUAINTED WITH THE MACHINE

WORKING OF BUCKET ELEVATOR:-

To start the machine the operator needs to press the green push button (ON Switch). And to turn off the machine the operator needs to press the red push button (OFF Switch). During machines working, even if the supply came back after supply failure. The operator requires to turn ON the machine again. It will not start automatically.



ON / OFF Push Button Switch



Contactor with
Overload Relay

Phase Failure
Relay

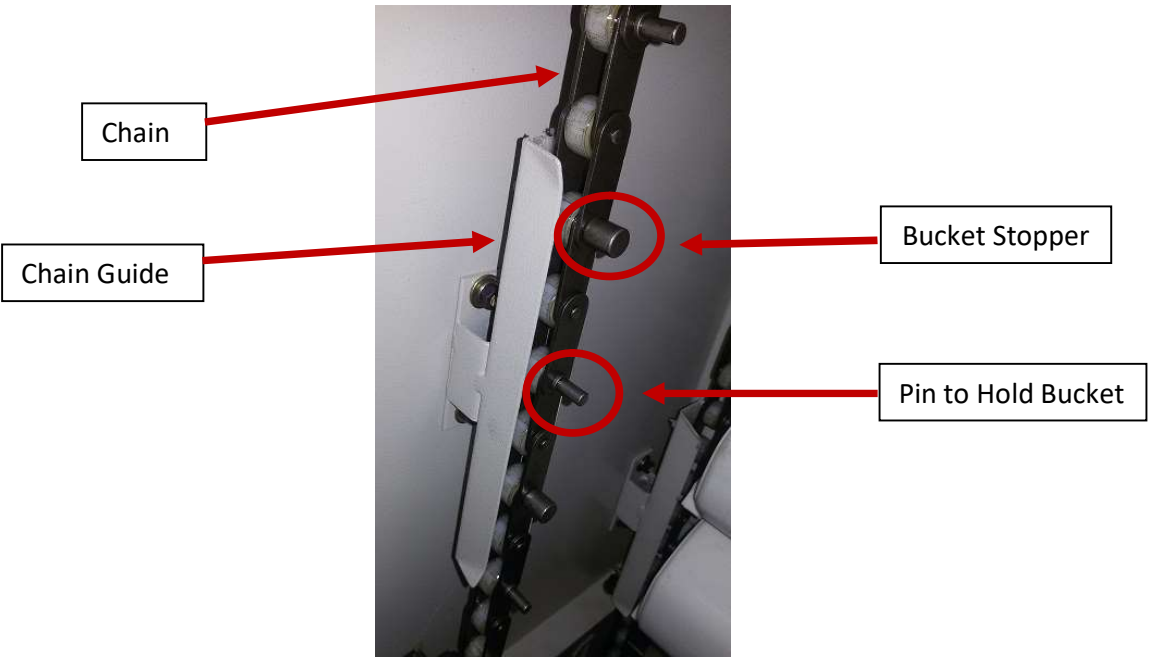
Phase Failure Protection Section

BUCKETS PLACING:-

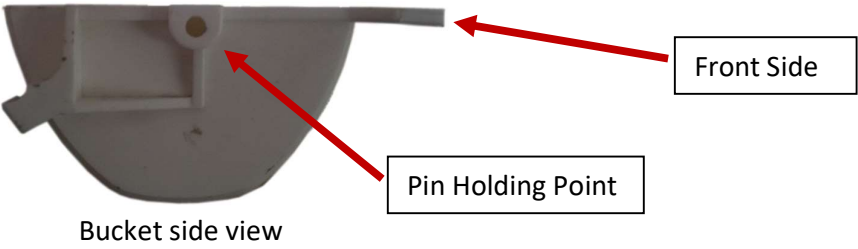
To Place the buckets, the operator needs to open the front door. Then put the left side chain on the left side of the bucket. There is a point on either side of the bucket to insert the chain's pin to hold the bucket. After that by pushing the right side chain to right side, place the right side chain to the right side of the bucket. In the chain, there is Pin to hold the bucket (Thin Pin) & stopper for the bucket (Thick Pin) intermediately. The operator can place the bucket on the bucket elevator only where there is no chain guide inside the front door side. Also, the operator needs to keep the bucket's front side facing towards him. The bucket should be parallel to the ground. Otherwise, the alignment of the chain is not correct. Placing bucket incorrectly will cause damages to the buckets.

Do not put head, hand or any other parts inside the machine when the machine is in running condition.





Bucket Placing Method





Placing bucket on the left side chain



Placing bucket on the right side chain by pushing the chain to right side



Bucket after placing in the chain

BUCKETS HOLDING CHAIN TENSIONING:-

After the continuous running of the machine the chain where the buckets are placed will be loose. During that time the operator needs to tighten the chain otherwise, it will cause to damage the buckets. Do the following steps to tighten the chain.

- 1) Tight both nuts equally clockwise a single turn.
- 2) Run the machine and allow completing one cycle rotation.
- 3) Do the steps 1 & 2 until the chains are tight equally.
- 4) Do not over tight the chain.

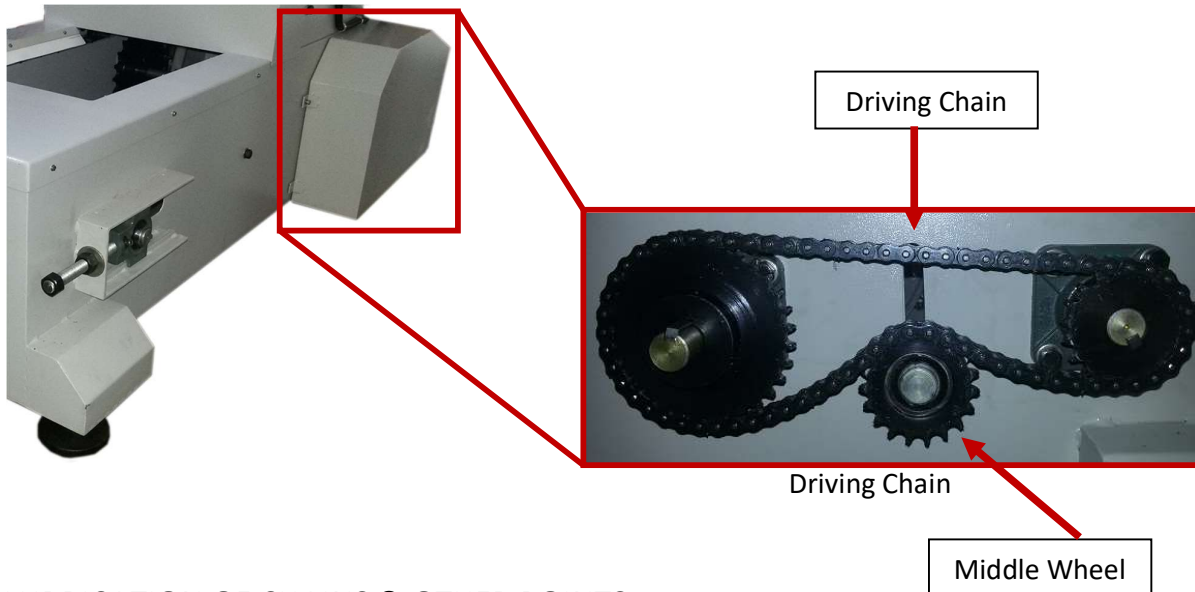


Chain tensioning nut



DRIVING CHAIN TENSIONING:-

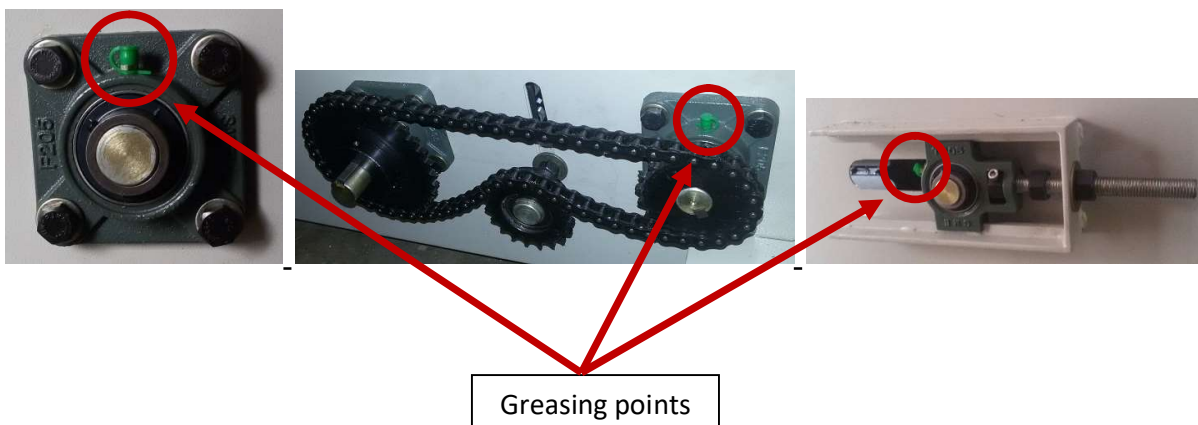
After the continuous running of the machine, the driving chain will be loose as like the buckets holding chain. To adjust the driving wheel tension the operator needs to adjust the position of the middle wheel to the upside. The driving chain is placed right of the machine, covered with a door.



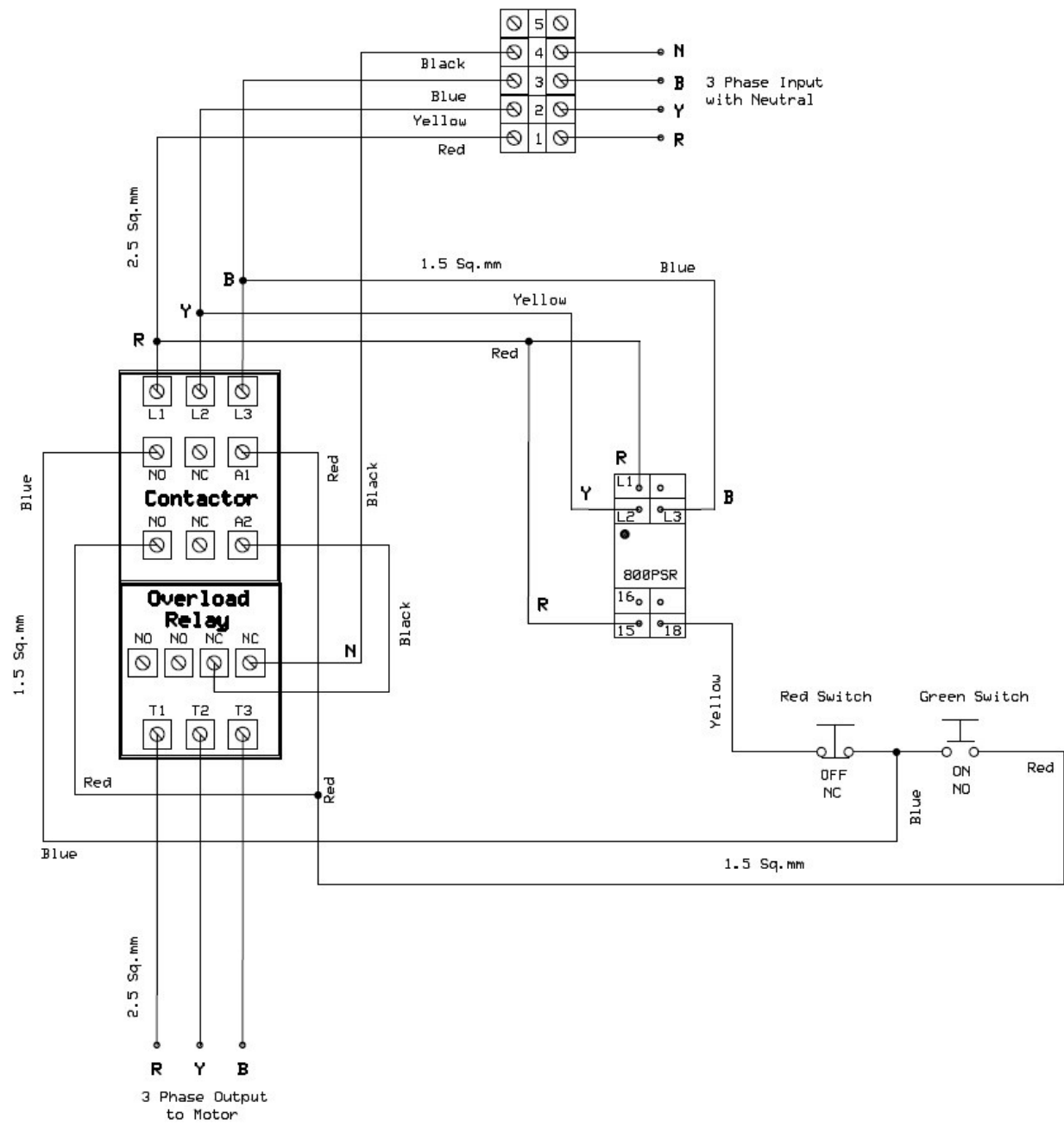
LUBRICATION OF CHAINS & OTHER POINTS:-

To provide lubrication on the buckets holding chain the operator needs to open the front door, and apply food grade chain lube to the both left & right chain evenly. Do not apply grease to the buckets holding chain.

Do proper cleaning & apply grease to the driving chain & other bearings (see picture) once in a month.



WIRING DIAGRAM:-



OPERATING CONDITIONS:-

Power: - 415V AC Three phase supply with Neutral.

CAUTION:-

1. Use proper earthing to ensure safety to the operator.
2. The machine's safety section shut down the machine automatically if there is any phase missing or phases connected in reverse.
3. Never run the buckets in the reverse direction, it will cause damages to the buckets.
4. Check Chain tension once in a month.
5. Provide lubrication on the proper place once in a month.

TECHNICAL SPECIFICATIONS:-

| Dimension (mm) | | | Weight approx. with accessories (Kg) | Power Rating | |
|----------------|-------|-------|--|--------------|------|
| H | L | B | | V | W |
| ----- | ----- | ----- | ----- | 415VAC | 800W |

**The power varies with the machine's operation. The mentioned value is the peak power consumed by the machine at 415VAC. The dimension varies with models.*

Trouble Shooting:-

| SI No | Problem | Reason | Remedy |
|-------|---|----------------------------|--|
| 1 | Machine Not working | No Supply | Check & Restore Input Supply |
| | | Phase Failure | Check 3 phases are available with Neutral & they are connected in proper direction |
| 2 | Supply is ok but still machine is not working | Driving chain slip | Check driving chain part & set to correct manner if there is any problem |
| 3 | Heavy noise from Bucket side | Bucket holding chain loose | Adjust chain's tension |

WARRANTY

We, Sepack India Pvt. Ltd. Warranty this product against defective material or workmanship for a period of one year from the date of purchase. We undertake to repair or replace at our option, any defective unit which we are satisfied was originally defective provided the unit is delivered at your cost to our factory/service center/authorized dealer. This warranty does not cover damage due to an accident, mishandling or negligence on the part of the customer or if the mechanism is tampered with by the customer or any unauthorized person. This warranty does not apply to breakage of Bakelite, porcelain, glass parts, heating element, fiber fabric, chord, chipping or peeling of paint, enamel or planting and denting or failure due to normal wear and tear of any appliances once the same has been said.

While sending the unit for repair, this warranty card together with the purchase bill should be produced in the service center. Those warranty cards do not have the stamp and signature of the authorized dealer will be treated as invalid.

| Machine Serial Number | Machine Model Number | QC sign with Date |
|------------------------|----------------------|-------------------|
| | | |
| Date of Installation:- | Seal & Signature | |

For Any Assistance Contact our Customer Support:

Sepack India Pvt. Ltd.

XII/293, Kizhakkambalam-683562, Alwaye, Kerala, INDIA.

Tel: **180030003377** (Toll Free), 0484-2682779, 2682780, 3218736, Fax: 0484-2681911

Email: sps@sevana.com, info@sepack.in

URL: www.sepack.in, www.sevana.com